

TOSHIBA
Leading Innovation >>>

APLIO JUST GOT EVEN BETTER
INTRODUCING THE INNOVATION 2016
UPGRADE



Aplio
Platinum Series

INNOVATION 2016 AT A GLANCE

More clinical detail

- New settings in the Precision technology package provide enhanced border delineation and better grey scale resolution
- Enhanced robustness and 3D imaging added to SMI
- Enhanced Shear Wave Elastography package with 3D capability

New diagnostic tools

- Freehand 3D imaging with standard linear and convex transducers
- Further extension of interventional toolset
- New premium transducers with high clinical utility

Faster and more efficient

- Enhanced work list management, faster access to patient data
- Comprehensive on-board reporting facilities and networking capabilities
- Choice of dual display modes for improved imaging efficiency



For more information call for a demo or visit our website www.toshiba-medical.eu



Aplio
Platinum Series

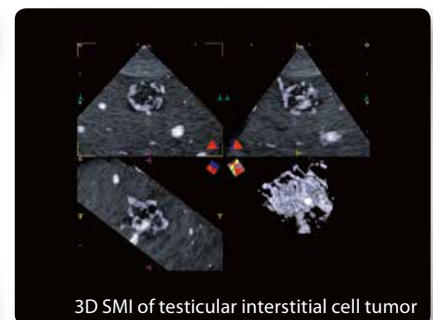
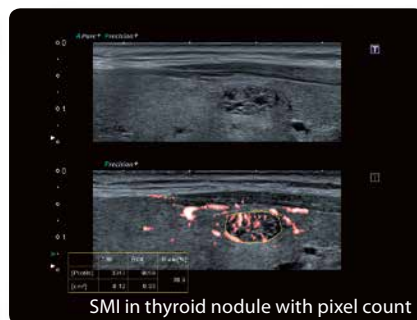
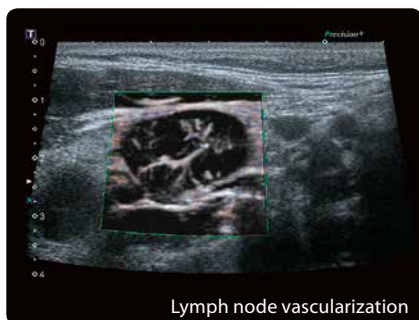


SUPERB MICRO-VASCULAR IMAGING (SMI)



Seeing the unseen

- Enhanced imaging robustness for faster results
- Volumetric SMI imaging with Smart 3D
- SMI now also available on Aplio 300

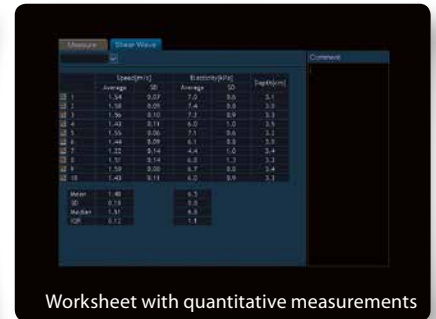
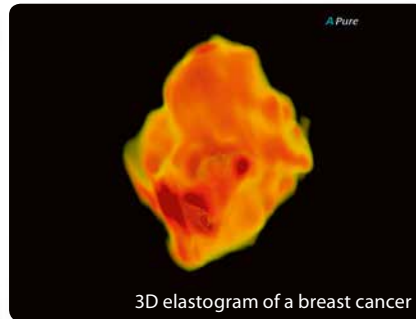
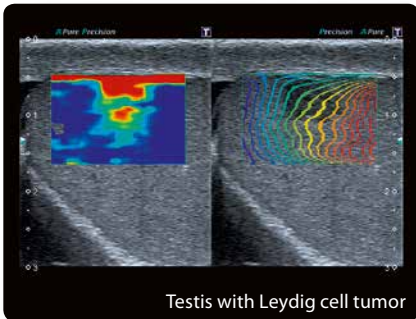
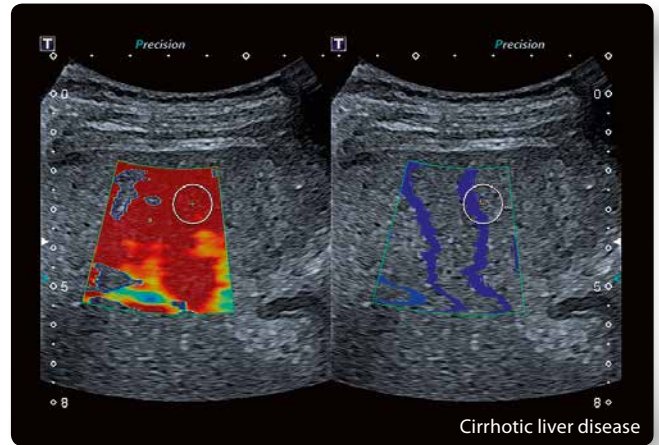


SHEAR WAVE ELASTOGRAPHY (SWE)



Reproducible results, intuitively visualized

- Further extension of compatible transducer range for endocavitary applications
- Twin View now available in Smart Maps for better assessment of the liver
- Combination with Smart 3D allows for volumetric elastography imaging
- Enhanced worksheet for easier quantification



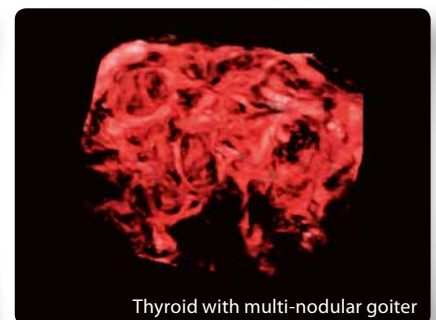
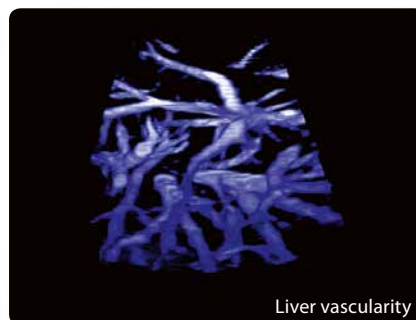
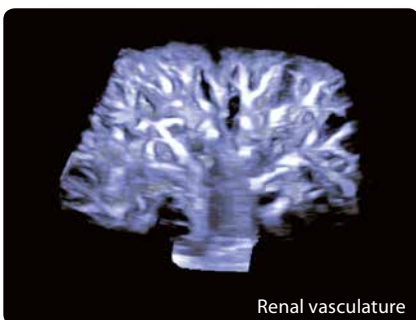
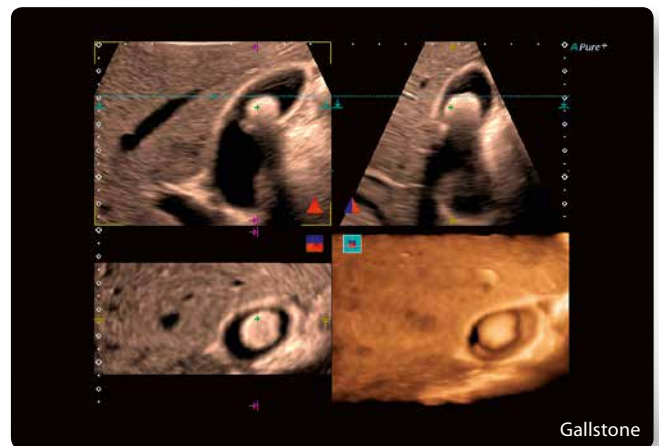
SMART 3D IMAGING



Volumetric imaging made easy and efficient

- Fast and easy acquisition of high-quality 3D volumes
- Compatible with standard linear and convex transducers*
- Supporting multiple modes including B/W, Color, Power Doppler, ADF, SMI, CEUS and SWE

*excluding endocavitary and 4D transducers

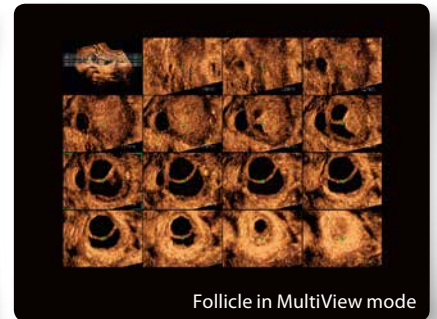


NEW PREMIUM TRANSDUCERS FOR ENHANCED CLINICAL DETAIL AND UTILITY

PVT-681MVL VOLUMETRIC ENDOCAVITARY TRANSDUCER

Lightweight performance, unparalleled sensitivity, more penetration

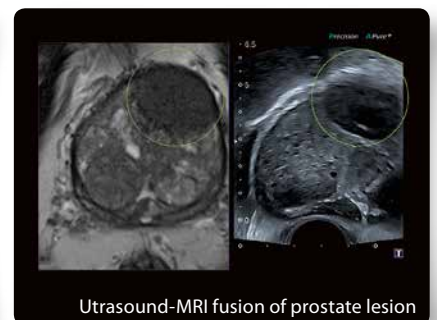
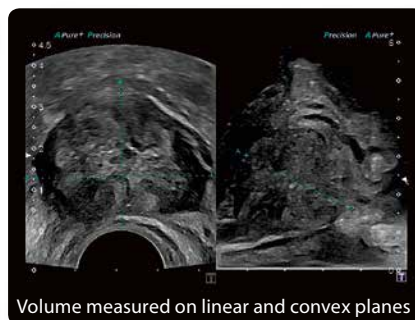
- **Ultrawideband transducer with enhanced Precision technology**
- **Extra-wide field of view with 180° scan angle and 150° sweep angle**
- **High frame rate imaging with spot-zoom and HD-zoom in 2D, 3D and 4D modes**
- **Advanced imaging including CEUS, elastography and SMI**



PVL-715RST BI-PLANE ENDOCAVITARY TRANSDUCER

High performance, enhanced versatility

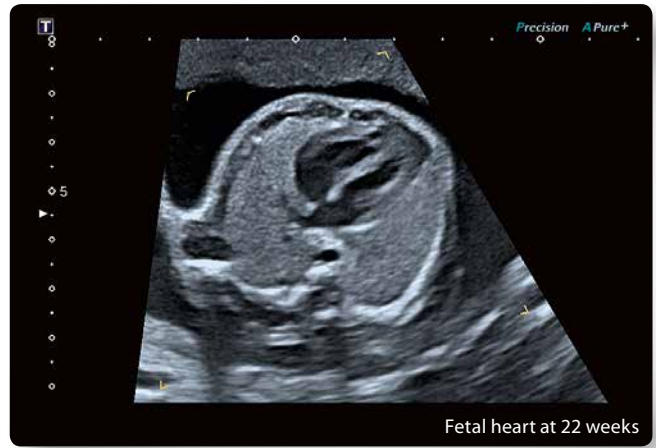
- **Bi-plane linear/convex transducer for transperineal prostate biopsy**
- **Ultrawideband transducer with enhanced Precision technology and SMI**
- **170° (convex) and 56 mm (linear) wide field of view**
- **Advanced imaging capability including CEUS, SMI and Smart Fusion**



PRECISION IMAGING

Precision+

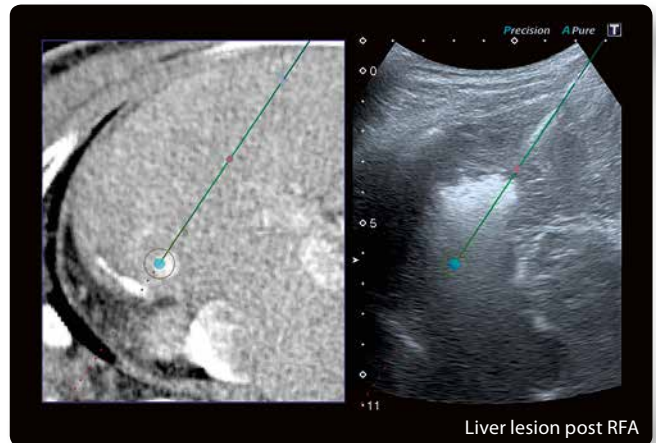
- Additional settings to further increase clinical confidence
- Improved grey scale resolution
- Further enhanced border delineation



SMART FUSION

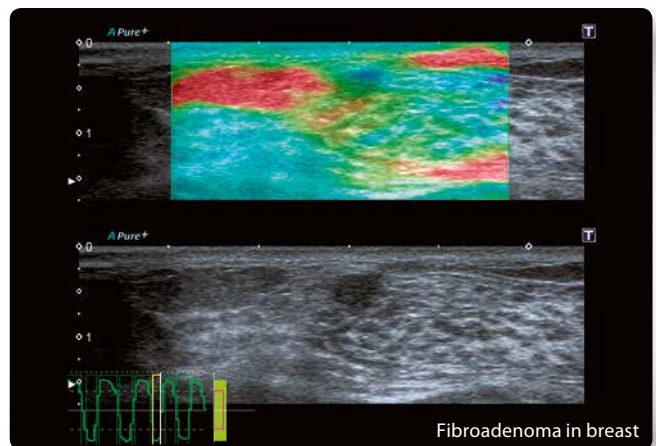


- Further extension of compatible transducer range for endocavitary applications
- New bilateral display of needle markers on both the reference and live ultrasound images
- Optimized workflow and productivity



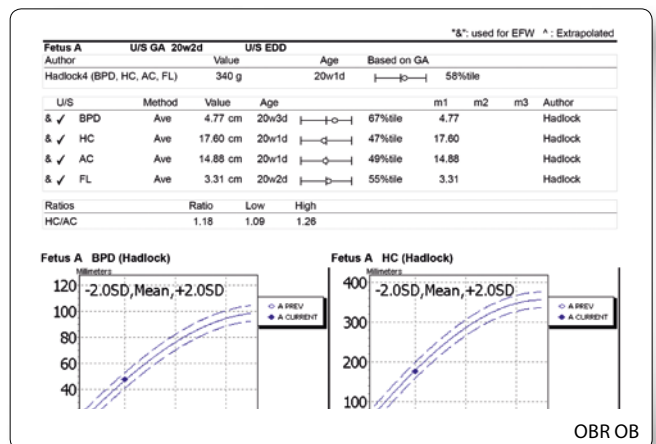
VERTICAL DUAL DISPLAY

- Increasing clinical efficiency in MSK and small parts assessment
- Direct comparison of two images with wider field of view
- Improved imaging efficiency for small parts and MSK examinations
- Supporting multiple imaging modes including Color and Power Doppler, SMI and SWE
- Available in live and playback modes



WORKFLOW ENHANCEMENTS

- Improved work list management
- Easy template customization including auto fill and default finding features
- OB reporting now including user-defined measurements and percentile graphs
- Enhanced compatibility with standalone OB reporting solutions



Aplio

Platinum Series

TOSHIBA MEDICAL SYSTEMS EUROPE

www.toshiba-medical.eu

©Toshiba Medical Systems Corporation 2015. All rights reserved.
Design and specifications are subject to change without notice.
MSSUL0013EUC 2015-10 TMSE

Toshiba Medical Systems Corporation meets internationally recognized standards for Quality Management System ISO 9001, ISO 13485.

Toshiba Medical Systems Corporation Nasu Operations meets the Environmental Management System standard, ISO 14001.

Aplio is a trademark of Toshiba Medical Systems Corporation.

Some features presented in this brochure may not be commercially available on all systems shown or may require the purchase of additional options. Please contact your local Toshiba representative for details.

Printed in Europe