

Faculty

Professor A. Blum

Department of Radiology, Centre University Hospital Nancy, France

Professor P. Texeira

Department of Radiology, Centre University Hospital Nancy, France

Professor G. Dautel

Emile Gallé Surgical Center, Nancy, France

Professor F. Sirveaux

Emile Gallé Surgical Center, Nancy, France

Who should attend

Radiologists, orthopedic doctors, MSK surgeons and radiographers with a specific interest in novel techniques in CT MSK imaging.

Language

English

Fee

€580,-. The fee includes lecture materials, coffee, lunch and a dinner.

Accreditation

ESSR Diploma: CAT 3 – 0.6 points

INAMI: 12 points

Registration

To register, please visit <http://msk.imagerieguilloz.com>

For more information, please contact:

Ms. Evelyne Boulogne - e.boulogne@chru-nancy.fr

Venue

Hôtel Mercure Nancy Centre Gare

11 Rue Raymond Poincare

54000 NANCY – FRANCE

Participants are free to book a room at the hotel of their choice.



CT MSK Workshop

CHRU, NANCY, FRANCE

Service d'Imagerie Guilloz

CHRU Nancy

29, avenue du Maréchal de Lattre de Tassigny

CO 60034 - 54035 NANCY CEDEX

13-14 September 2018



imagerieguilloz

<http://msk.imagerieguilloz.com>



CT MSK Workshop

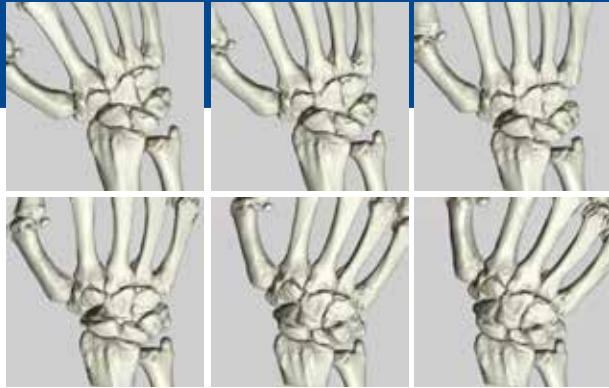
CHRU, NANCY, FRANCE



MSK Wide-Area Detector CT: Advanced Applications

4D Dynamic, Perfusion, Subtraction
and Metal Artifact Reduction

13-14 September 2018



MSK wide-area detector CT: Advanced applications

4D Dynamic, Perfusion, Subtraction and Metal Artifact Reduction

After a successful third edition of the workshop in April 2017, it is our pleasure to invite you to the fourth edition of our workshop dedicated to CT imaging in musculoskeletal disorders. The aim of this unique 1.5 day course is to improve your knowledge of the wide range of applications possible with wide-area detector CT. This interactive workshop will focus on 4D dynamic scanning, perfusion and DSA-like imaging, along with the use of metal artifact reduction techniques. An international, experienced faculty will guide you through the entire workflow with a program including both scanning procedures and post processing techniques.

We look forward to welcoming you to Nancy!



Prof. Pedro Teixeira



Prof. Alain Blum

Program

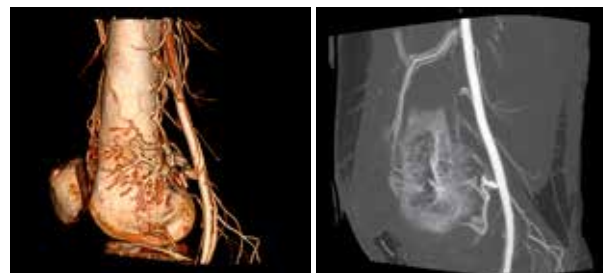
First day

Morning – Metal Artifact Reduction and Prosthesis

- 08.30 – 09.00 Registration and coffee
- 09.00 – 09.15 Opening and introduction
- 09.15 – 09.45 Principles of metal artifact reduction, different techniques and acquisition protocol
- 09.45 – 10.15 Identification of hip prosthesis
- 10.15 – 10.45 How to evaluate a hip prosthesis / Tips with arthrography
- 10.45 – 11.00 Coffee break
- 11.00 – 11.30 The surgeon's point of view
- 11.30 – 12.00 Complications of hip arthroplasty
- 12.00 – 12.30 Advances in image post-processing
- 12.30 – 14.00 Lunch

Afternoon – Perfusion, Subtraction and Hospital visit

- 14.00 – 14.15 Perfusion in MSK oncology
- 14.15 – 14.45 DSA-like bone subtraction
- 14.45 – 15.15 Functional angiography in MSK CT
- 15.30 – 16.00 Transfer to the hospital
- 16.00 – 17.00 Live patient scanning
- 17.00 – Dinner



Second day

Morning – Dynamic CT

- 08.30 – 09.00 Technique and acquisition protocol
- 09.00 – 09.30 Dynamic imaging analysis and post-processing
- 09.30 – 10.00 The surgeon's point of view
- 10.00 – 10.30 Coffee break
- 10.30 – 11.00 4D-CT of the wrist
- 11.00 – 11.30 4D-CT of other joints
- 11.30 – 12.00 Quantitative 4D-CT of joints - where do we stand
- 12.00 – 13.30 Lunch

Afternoon – Hands on sessions

- 13.30 – 14.30 Hands on workstation - review and diagnosis (Single Energy Metal Artifact Reduction)
- 14.30 – 15.45 Hands on workstation - review and diagnosis (Dynamic CT)
- 15.45 – 16.00 Wrap up and adjourn

